

622-R-2

Up to Day 6



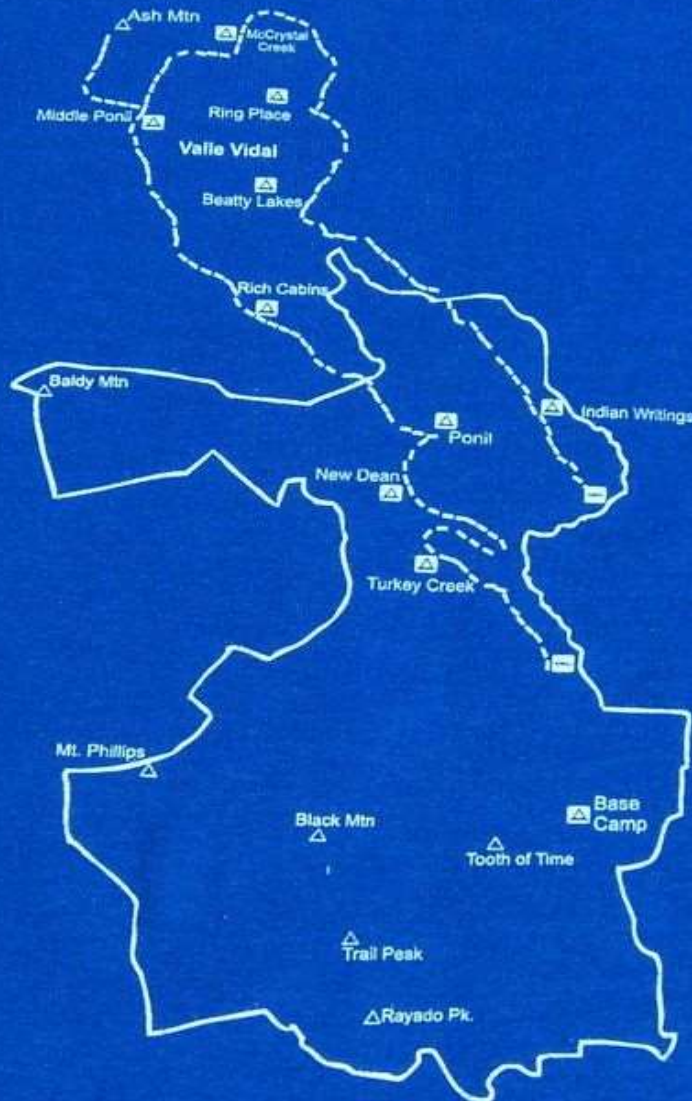
Philmont Scout Ranch

Troop 214
Russellville, AR

622-R-2

Philmont Scout Ranch

Cimarron, New Mexico



12 Day Trek-71 Miles

Day -1, 1930 – Tucumcari – Route 66 – official picture



Day -1, 1930 – Tucumcari – Route 66 – unofficial picture



Day 0, 1130 – Base Camp – Trail Bound Tent City



Day 0, 1400
Base Camp
Shake Down



Day 0, 1400 – Base Camp – Shake Down





Day 0, 1800 – Base Camp – Blah blah blah...



Day 1, 0800 – Villa Philmonte

Day 1, 0800 – Villa Philmonte



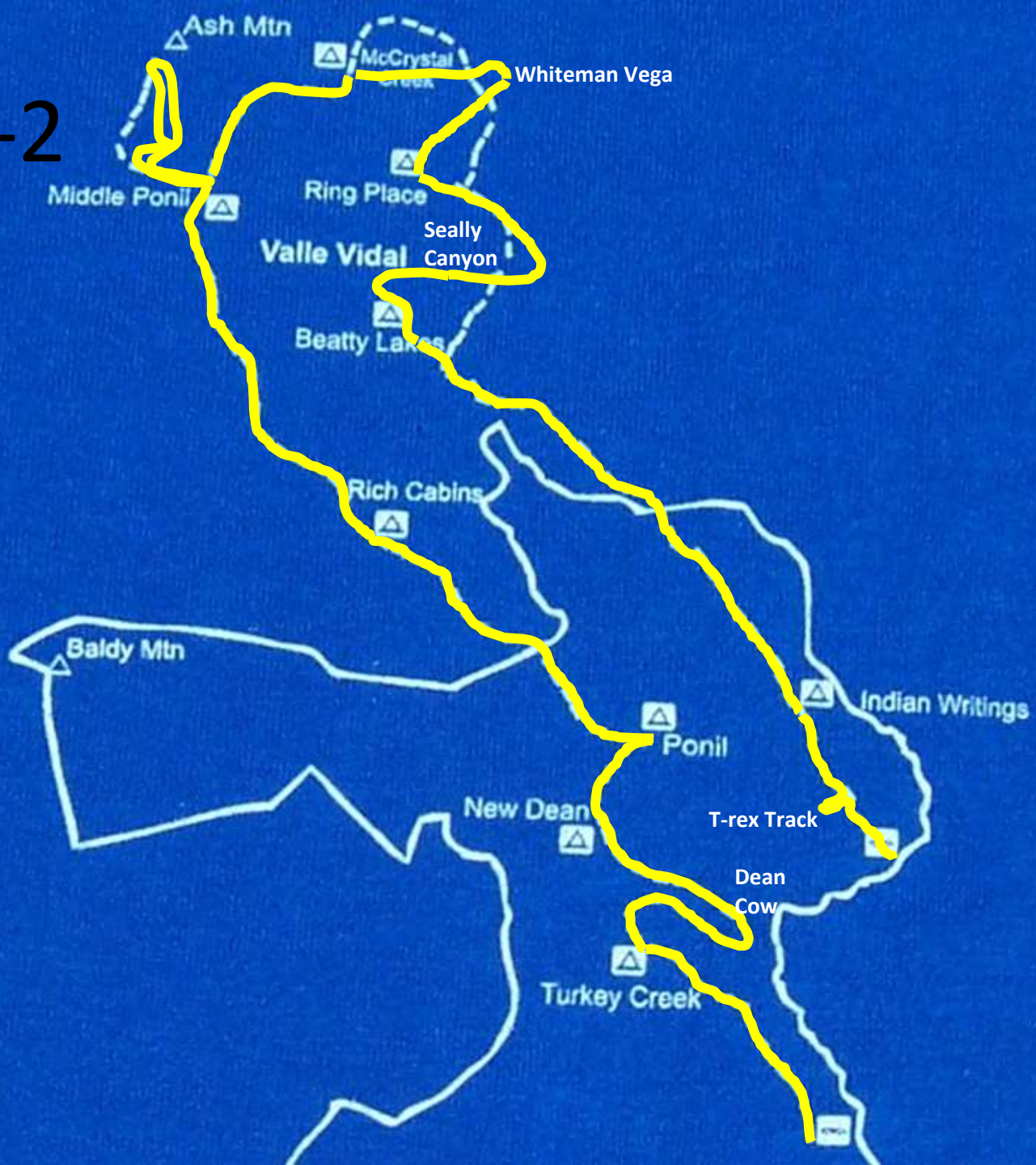


Day 1, 0800
Villa
Philmonte



Day 1, 0830 – Villa Philmonte

622-R-2





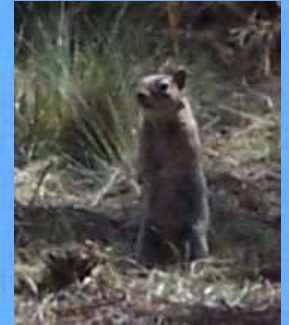
Coyotes
(only heard)

Hilmont So Ranch

Cimarron, N



New Mexican horny toad



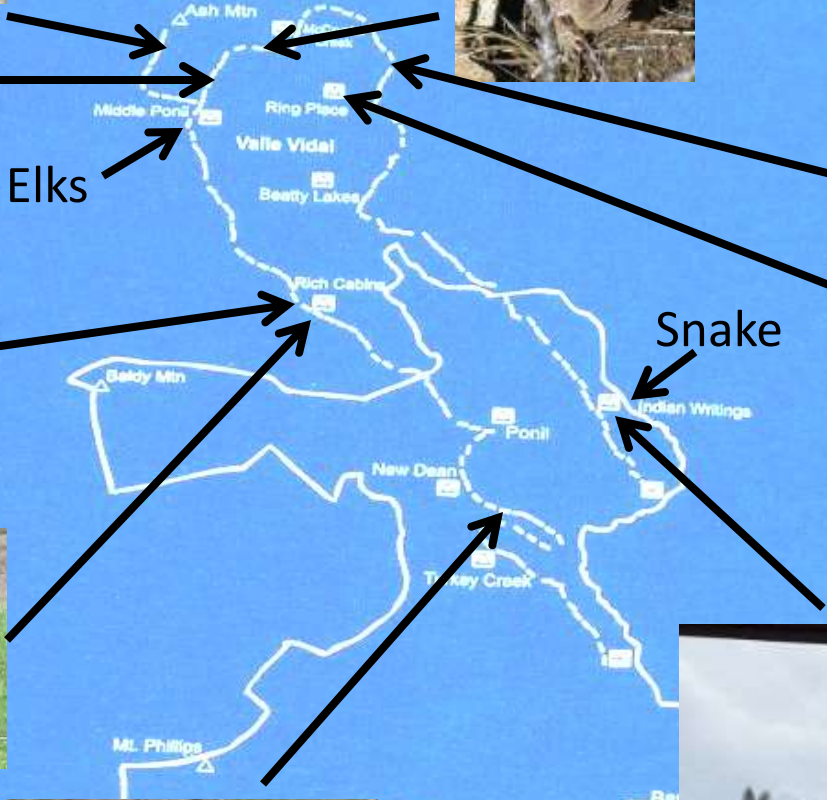
Mini bears



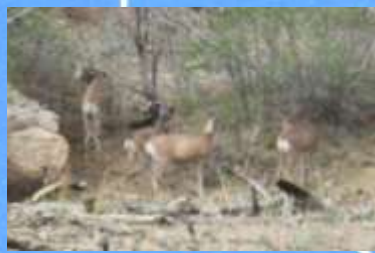
Snake



Turkey



Elks



Mule deer

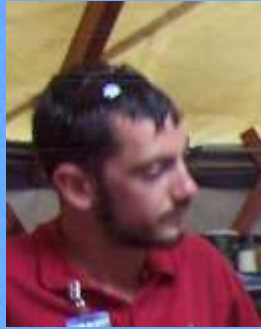


Humming birds

12 Day Trek - 71 Miles
Encountered local, imported, and dead wildlife

Philmont Scout

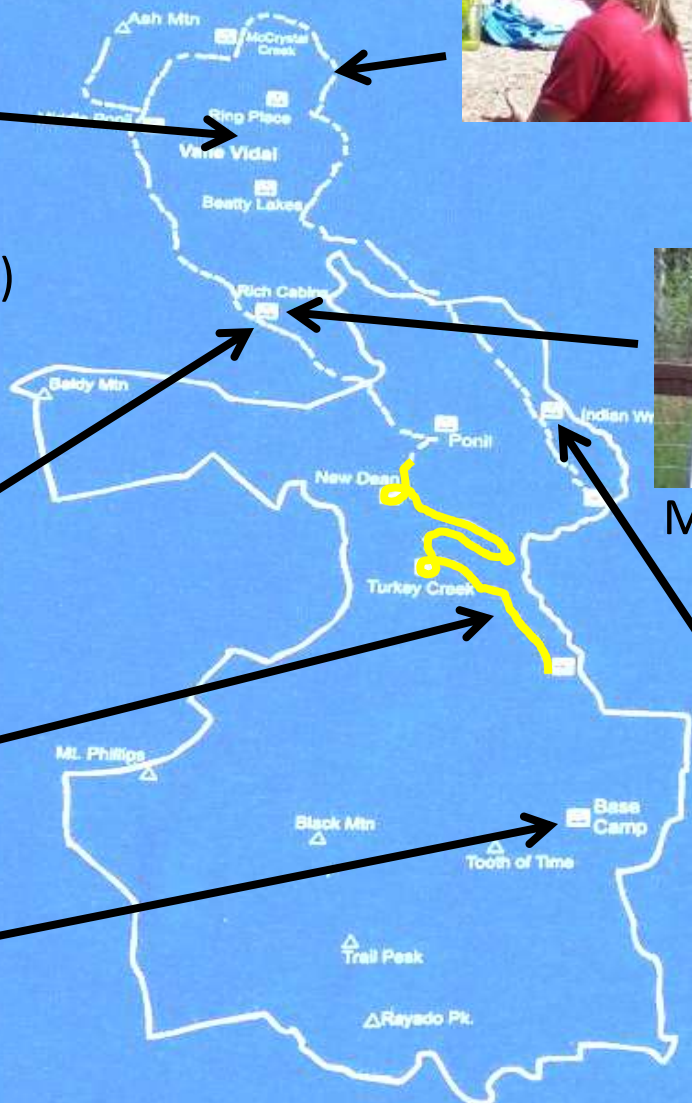
Cimarron, New Mexico



Paul,
(rescued Bruno not pictured)
Search and Rescue,
Seally Canyon



Erin,
Conservation project,
Witheman Vega



Dimitri,
Rich Cabins



Madame and Mister Rich,
Rich Cabins
Dimitri



Christine,
Ranger



Abe,
Indian Writings

12 Day Trek-71 Miles

Staff



Day 1, 1000 – Turkey Creek Turnaround – Map Skills



Day 1, 1130 – Pack off break



Day 1, 1130 – Pack off break



Day 1, 1130 – Pack off break

Day 1, 1300
Lunch

Dry well on
first day! →



← Christine was awesome!



Oops bag Bear bags

Day 1, 1700 – Turkey Creek Trail Camp – LNT bear bags lesson



Selecting trees

Day 1, 1700 – Turkey Creek Trail Camp – LNT bear bags lesson



Securing bags

Day 1, 1700 – Turkey Creek Trail Camp – LNT bear bags lesson



Day 1, 1700 – Turkey Creek Trail Camp – LNT bear bags lesson



Hoisting the
oops bags

Day 1, 1700 – Turkey Creek Trail Camp – LNT bear bags lesson



Day 1, 1900 – Turkey Creek Trail Camp – Setting camp



Day 2, 0530 – Turkey Creek Trail Camp – Reveille

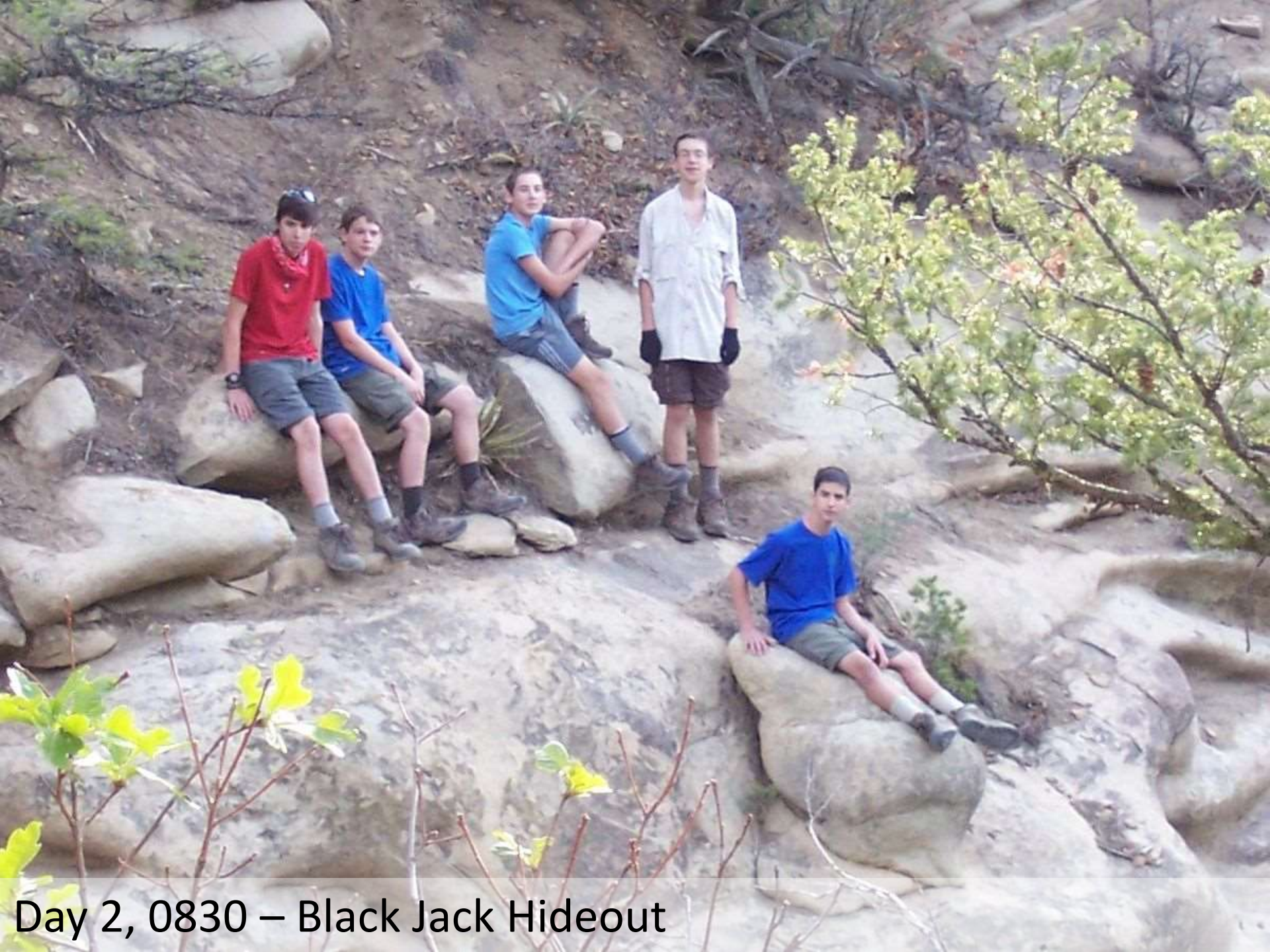


Very little water left!

Day 2, 0700 – Turkey Creek Trail Camp – Leaving soon



Day 2, 0700 – Turkey Creek Trail Camp – Leaving soon



Day 2, 0830 – Black Jack Hideout



Day 2, 0830 – Black Jack Hideout – semi-fossilized tree



Day 2, 1200 – Dean Cow – Rock climbing and rappelling



Day 2, 1200 – Dean Cow – Rock climbing and rappelling



Day 2, 1200 – Dean Cow – Rock climbing and rappelling



Day 2, 1200 – Dean Cow – Rock climbing and rappelling



Day 2, 1500 – Dean Cow – Lunch (dinner from previous night)

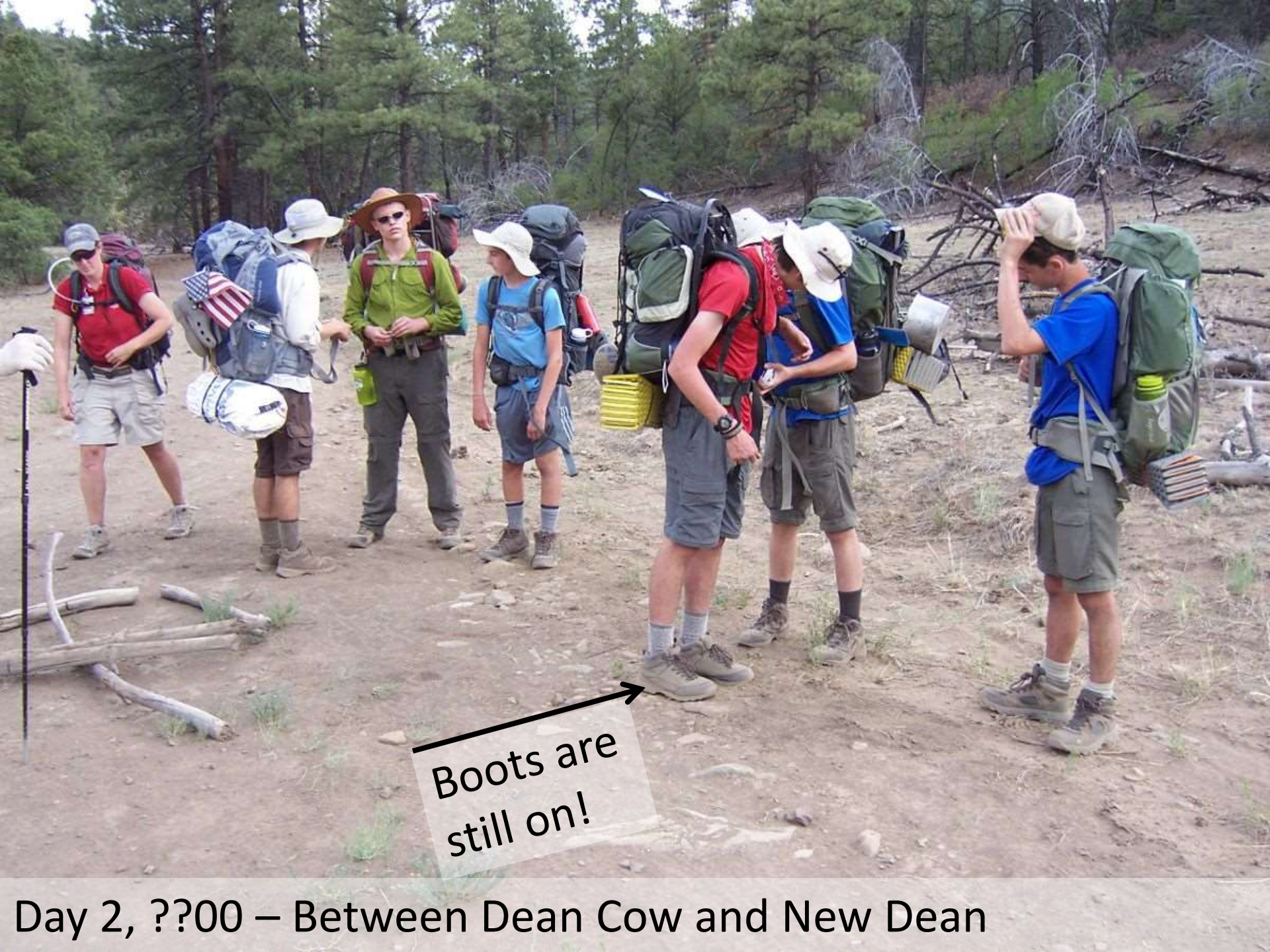


Pro map reader

Day 2, 1500 – Dean Cow – Resting while lunch is cooking



Day 2, 1600 – Dean Cow – Dishes after lunch



Boots are still on!

Day 2, ??00 – Between Dean Cow and New Dean



← Map!

Day 2, 1900 – New Dean Trail Camp – Bear bags duty



Day 2, 2000 – New Dean Trail Camp



Day 3, 0900
Dean Skyline



Day 3, 0900 – Dean Skyline – Christine will leave us soon...




Colorado peaks

Little Castilla

South Ash Mountain

Day 3, 0900 – Dean Skyline



Campsite address:
Third Bush on the Right



Day 3, 1600 – Arriving at Ponil Staffed Camp



Day 3, 1730 – Ponil Staffed Camp – Chuck Wagon Dinner



Day 4, 0730 – Ponil Staffed Camp – Cleaning the kitchen area



Day 4, 0930 – En route to Rich Cabins



Day 4, 1200 – En route to Rich Cabins – Lunch



Day 4, 1200 – En route to Rich Cabins – Siesta after lunch



Day 4, 1500 – Arriving at Rich Cabins Staffed Camp



Day 4, 1500 – Meeting Mr. Rich at Rich Cabins Staffed Camp



Siam in boots

Day 4, 1500 – Rich Cabins Staffed Camp



Day 4, 1530 – Rich Cabins Staffed Camp

Treacherous doorway



Madame Rich



Day 4, 1530 – Rich Cabins Staffed Camp



Day 4, 1600 – Rich Cabins Staffed Camp



Day 4, 1600
Rich Cabins Staffed Camp

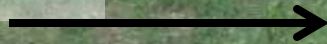


Day 4, 1800 – Rich Cabins Campsite

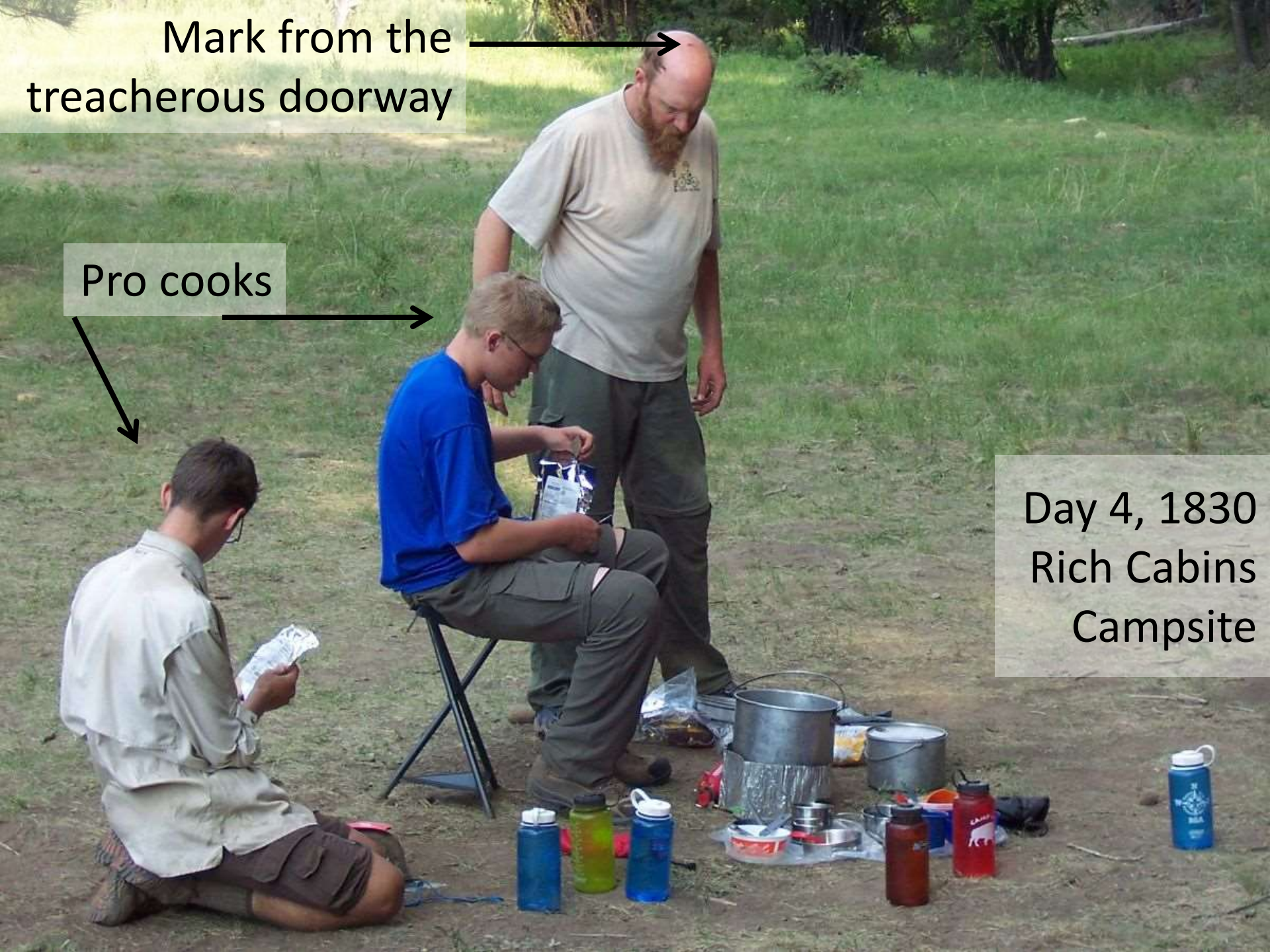
Mark from the treacherous doorway



Pro cooks



Day 4, 1830
Rich Cabins
Campsite





Dimitri Hans

Madame and Mr. Rich

Madame Rich's sister

Day 4, 1900 – Rich Cabins Night Show



Day 4, 1900 – Rich Cabins Night Show



Day 5, 1200 – Lunch



No more boots!

Day 5, 1230 – First rain and thunderstorm



Day 5, 1230 – Catch the ball in the rain!



No more roads, just trails!



Day 5, 1300 – Valle Vidal, en route to Middle Ponil LNT



Day 5, 1400 – Valle Vidal, en route to Middle Ponil LNT

Day 5, 1600 – Middle Ponil LNT – Drying wet clothes





Day 5, 1600 – Middle Ponil LNT – Drying wet clothes



Day 5, 1800 – Middle Ponil LNT – Cooking dinner



Bucket

Before dinner: hands washing
After dinner: feet washing

Day 5, 1830 – Middle Ponil LNT – Campsite



Map reader
of the day

Day 6, 0900 – To South Ash Mountain



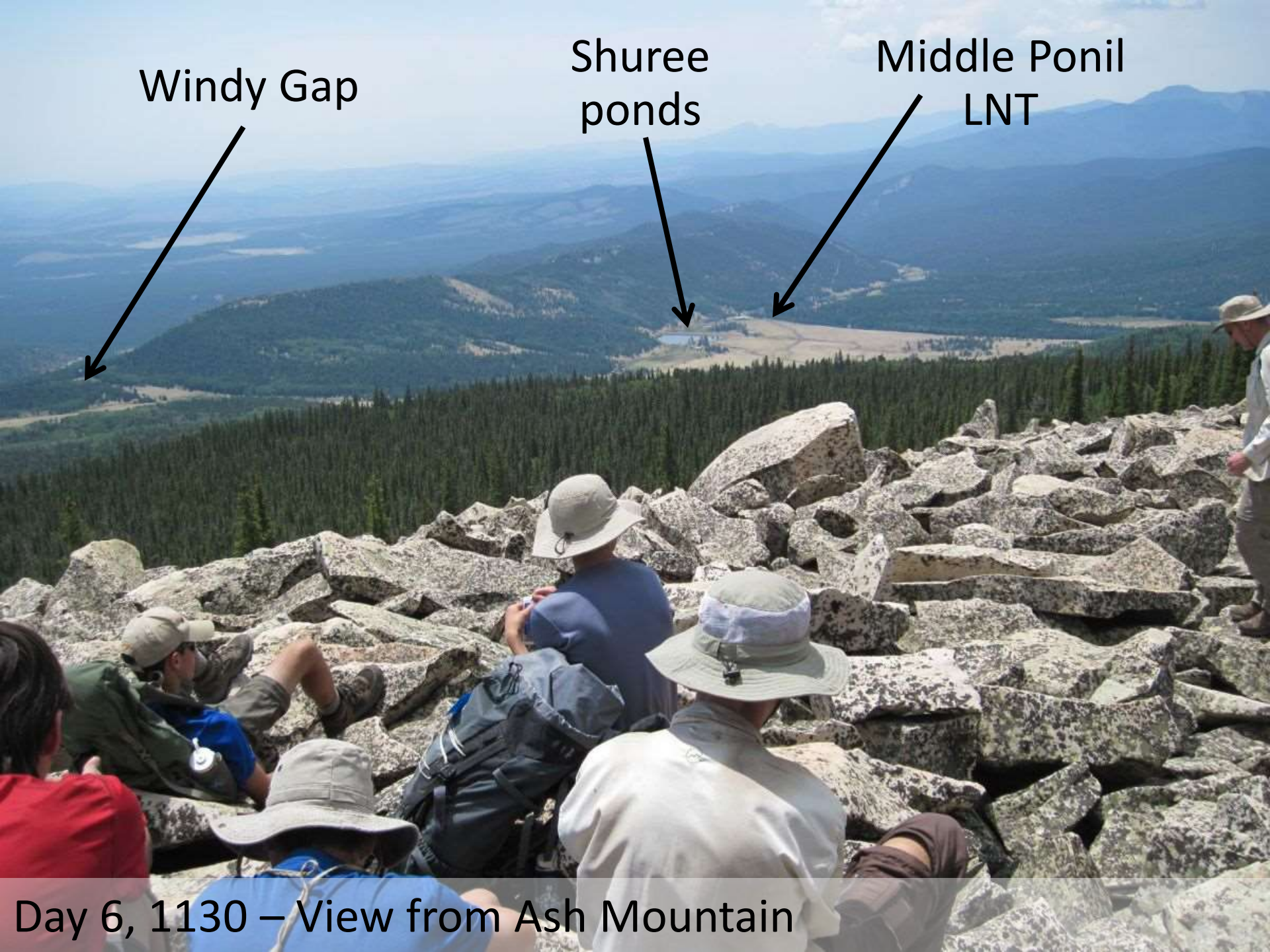
Day 6, 1000 – To South Ash Mountain



Day 6, 1030 – To South Ash Mountain



Day 6, 1130 – At South Ash Mountain



Windy Gap




Shuree ponds



Middle Ponil
LNT



Day 6, 1130 – View from Ash Mountain



Uh oh...

All right, guys,
time to go!

Day 6, 1130 – At South Ash Mountain



Day 6, 1330 – Lunch at Shuree's Cabin



Day 6, 1430 – Return to Middle Ponil LNT



Day 6, 1530 – Middle Ponil LNT – Catch in the rain



Day 6, 1730 – Middle Ponil LNT – Dinner is cooking